



36th Ipswich Scout Group Annual Report

May 2014 - May 2015

Financial Year, Jan 2014 - Dec 2014

Registered Charity No. 1021334

Wednesday May 6th 2015 6:00pm

AGENDA

The meeting will be called to order at 6.00 p.m.

- 1] Welcome address
- 2] Business of the evening:
- 3] Apologies
- 3a] Minutes of the 2013 – 2014 AGM
- 3b] Matters Arising
- 3c] Confirmation of the Minutes
- 4] Reports from the Chairman, Treasurer, GSL and Cub leader
- 4a] Adoption of the Treasurer's Report and Statement
- 4b] Approval of Reports
- 8] Appointment of Group Chairman
- 8a] Appointment of deputy Group Chairman
- 9] Approval of nominated Committee Members
- 10] Election of Officers:
- 12] Date of Next AGM

Minutes of the AGM of the 36th Ipswich Scout Group held on 22 May 2014

Jonathan welcomed everyone and our guests Jenny Mullen, Tina Vickers and Lesley Brown

Apologies

Apologies were received from Ray Taylor, Roger Fern and Richard Kirkby.

Approval of Previous Meeting's Minutes

The minutes of the previous meeting were agreed as an accurate record of the meeting. It was proposed that these should be adopted by Richard Farthing and seconded by Damon Hyland.

Group Chairman Report

Jonathan thanked everyone that has helped in the past 12 months, including the Leaders, assistant leaders and Exec. The group is growing and we have a new Explorer group. We always need volunteers to help with all of our events, any help is welcome. The train last year made £1000 profit, this year it should raise more due to the insurance now being put under the general Scout policy.

We had our annual fete had a good attendance and we made approximately £3000 profit. We doubled the money due to a helper that had a "matched fundraising scheme". If anyone has this at work please look at it. Planning for this year's Fun Day is well under way; this year will be Football world cup theme. Fireworks night another good night, Christmas fayre/race night, they raised a good amount of money but they were not well attended.

Easy fundraising is a way that you can donate to the group when you shop. easyfundraising.org. Thanks to the Exec team, we have had lots of discussions on all kinds of subjects, and planning for the future.

Treasurer Report

The total receipts for the group for the 12 months ending 31st December 2013 were £16,677.21 (down by £4000), and the expenses were £13,904.63 (down by £16,000) on previous, this gave the group a surplus of £2772. At the end of the year the group had £30,877 in our account. The groups fundraising has brought in over £13,200 during the year, the Hall hire brings almost half of the fundraising income. The accounts this year have been scrutinised by Colin Bush & co, chartered certified accountants. Richard Farthing said that if we had no funds coming in in 2 years we would be broke, even though it looks as though we have a lot in the bank.

Group Scout Leader

We are maintaining and have some new leaders, but we do need some more helpers. The beavers now have 24 Beavers and a waiting list of up to 15, which is a healthy position to be in.

As Jonathan mentioned we have an Explorers group which is due to a lot of meetings with the District and they agreed to the Bourne Bears being attached to

us. We started with 3 members we now have 10 with 3 more coming soon. A camp is proposed for this year.

Cubs and Beaver camps are also planned.

Thanks to Tony for all that he does and with the Hall hire.

We are looking at improvements to the hall, sound proofing and remote heating. The group belongs to the kids – without help we cannot run, we are a good group with funds in the bank but without help we are not viable.

Approval of Accounts

The accounts were approved by Tina Vickers and seconded by Pam Marsh.

Appointment of Chairman

Jonathan stepped down and Chris Wise took over and Damon Hyland re nominated Jonathan Gorham there was a show of hands and this was agreed.

Appointment of Deputy Chairman

Richard Farthing was reappointed 1, Julia Oldaker 2, Damon Hyland

Approval of nominated committee members

All standing exec members were reappointed

Section leaders agreed to be the trustees of the group

Date of next Meeting 21rd May 2014

Jenny Mullen stood up to address the group

Jade Marsh gave a presentation about the Jamboree

May 2014 – May 2015 Reports

Chairman's Report

This year my report starts with some sad news. Tony Marsh, who was a driving force for the scout group, passed away on the 27th of April. Tony has had many roles in the forty years he has helped the scout group and during my time as chairman he has combined QM, hall bookings, exec member and the fete committee. Tony will be missed by many people in the group and the local community and I would like to offer our condolences to Pam and Family.

During the last twelve months we have continued with many of our regular fundraising events including the fete, fireworks night and many days out for the train. One new fundraising activity last year was to assist with parking at a rugby event held by St Josephs. This was a simple fund raising activity that we hope to do again.

The HQ building is now our most valuable asset. The hall is in use most days with regular and party bookings. It is very important that we maintain and improve the facilities at HQ to ensure that the bookings continue. In January this year some members of the group installed sound proofing panels in the ceiling and the reports back from the users of the hall is that the panels have substantially

reduced the echo. The exec is currently considering other enhancements for the hall.

The 36th Ipswich Scout group has had a good year; we have a good number of young members, a strong team of leaders and helpers, a healthy bank balance and a good range of facilities and equipment. None of this would be possible without all of the hard work of the Leaders, assistant leaders, the exec, the fun day committee and all the parents and friends of the group who get involved and give up their valuable time to support the group.

For various reasons there are exec roles that are currently vacant. This includes the treasurer, secretary, QM Town, QM Country, Hall Secretary and adhoc Hall entry. Please consider if you can help with any of these roles. This could be yourself or someone you know, like friends or extended family.

As usual we are also looking for help with the Fun Day on the 4th of July and people to help with the train. **If you can help please get in touch.**

Jonathan Gorham (Chairman)

Treasurers Report

Financially the group currently in a very healthy position

The total receipts for the twelve months ending 31st December 2014 were £21,914.12 (Up by £5000) and our expenses were £14,959.89 (Up by £1,000) on the previous twelve months, this gave the group a surplus of £6954.23.

At the end of the year the group had £37,831 in our account.

The groups fundraising efforts have brought in in excess of £17,300 during the year with over £10,000 of this coming through the letting of the hall.

Summary

The accounts remain quite healthy due to the work of the committee and helpers in fundraising.

We do have a number of long term contracts that account for a lot of the hall income, this does mean that a lot of work has to be done to keep the hall well maintained and this is an ongoing commitment.

The executive committee are presently making arrangements to replace equipment that is past its best and will also support the sections if required.

The accounts are being scrutinised this year by Colin Bush & Co, Chartered Certified Accountants.

Clinton Brown (Treasurer)

Group Scout Leaders Report

The Past year for the 36th Ipswich has been another successful year. The Beaver Scout Colony has grown to reduce the waiting list, this is a manageable level now, and the Cub Scout Pack has remained stable with a steady influx from Beavers, an exodus to the Scout Troop and a small waiting list. The Scout Troop has maintained its number at about 20 Scouts. The Explorer Section has increased in number and this should continue into the future with Scouts moving on.

All sections participating in District or County run activities. It was lovely to see all the sections represented Wolsey District swimming gala.

The Group held its first Family Camp for many years at Bradfield Combust near Bury St Edmunds, this was very successful with all those that attending having a wonderful fun weekend. After setting up camp and stowing provisions, we had lovely BBQ and arranged games for the kids, with those adults not involved in the games chatting away the evening. The following morning after breakfast the adults and kids were placed into teams and challenged to build a catapult to fire tennis ball at targets. There were different ideas on the catapult and a clear winner. In the afternoon, the same teams rotated round different bases to try different team build activities and finished off with a tug of war. In the evening the kids had a game of cricket. On the last day everyone broke camp.

Special thanks to Damon for arranging & coordinating the camp and Naz for planning, preparing and cooking the food, everyone ate beautifully.

In 2016 I would like to arrange, either a Group camp for all the sections or a Family Camp for everyone to participate in, please let me know you would like to do.

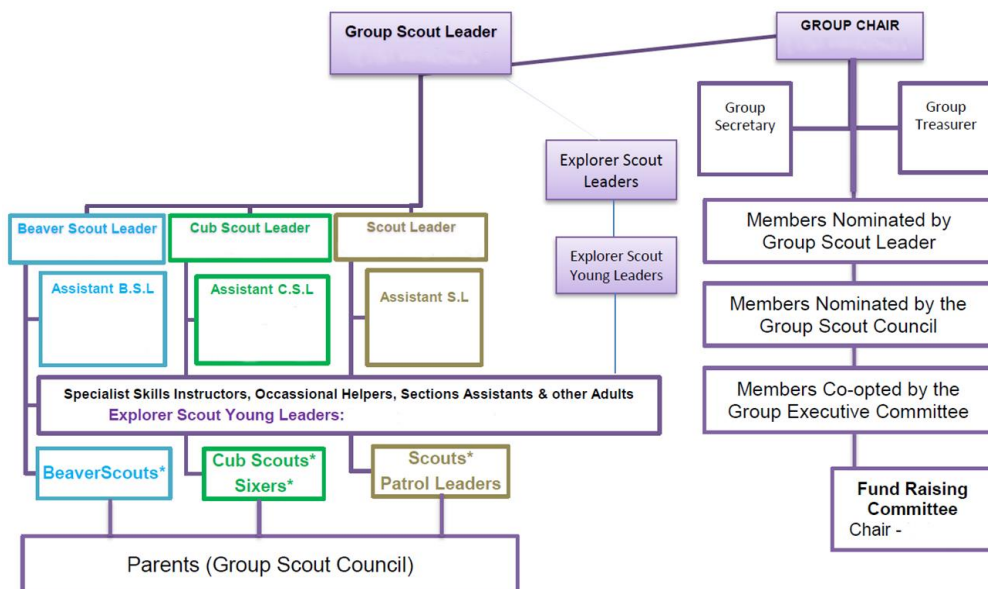
Before I talk about the individual sections, I'd like to explain the structure of how your Scout Group works.

The Group belongs to the Beavers Cubs & Scouts whilst they participate within the Scouting.

The Leaders & Executive Committee members are the trustees for the Group, on behalf for your children and run the Group for them, to provide a varied, interesting and enjoyable program of activities, whilst teaching them practical, social and leaders skills that they can use in adult life.

As a Parent or Guardian of a Beaver, Cub or Scout you automatically become part of the Group Scout Council. As a member of the Council, you represent your child at the Groups AGM and hold their voting rights to have your say in how the group is run.

All the Leaders, helpers and Group Executive Committee members give their time for free, to see your children getting involved in new exciting activities and learn new social, leadership, team and practical skills.



On a personnel note, the news of Tony's passing last week was deeply felt by me. I wish to pass on my greatest condolences to Pam, Richard, Dean and all the family. Tony will leave behind a huge hole in his family and also within the Scouting Family. He was the glue and guidance for both.

For the Group to function and provide a varied program we need you the parents to assist in whatever way you can.

This can be a commitment to become within a Section a:-

- Leader,
- Sectional Assistant
- Occasional Helper,
- Nominated Member of the Executive Committee,
- Assisting in the plan or running of fund raising activities that keep the Group viable,
- To help keep the two sites clean, tidy and do odd maintenance jobs.

There is only so much that existing people can do and achieve, we need fresh people coming on board to continue to assist in the future success of the 36th Ipswich Scout Group. If you can help in any way please speak to any of the leaders or Executive Committee members, none of us will say no to any type of assistance that you could possible give.

All sections are increasing the number of individual and joint camping weekends; this is where they put into practice the skills they having been learning during the weekly section meetings.

It truly is great to see all of the young people involved in the group have developed immensely in the past year. All sections have also been making the most of our country HQ at Charity Farm.

Two years ago, we had our first for many years Group Camp which was very successful. We had yet another successful firework evening with many parents and young people turning out and braving the cold Sunday evening.

Once again this year, the 36th Ipswich was well represented in the Gang show with members of scouts, cubs and young leaders. Well done to each and every one of you who took part.

I would like to thank all the Leaders and Helpers that give up so much time every week to dedicate to the young people of the group, ensuring they get the most out of life and expand their skills and knowledge to help them develop into better people and enjoy new experiences along the way. Without these valuable people, the group would not be as successful as it is today.

I would also like to thank the committee for their continued hard work and support in keeping the group running and ensuring the future of the 36th Ipswich is a very stable one. With all the red tape, policies and rules, it is not always easy but the committee are always dedicated to ensuring the best for the young people of the group.

The Hall hiring generates enough this year to cover the annual costs of running the 36th Ipswich Scout Group. Also as part of the Hall hiring, I would like to thank Jan and her father of all the cleaning they have done of the last year.

The group cannot run without the adult support, especially from Parents. There is a lot that goes into Scouting and there are many different ways that you can help. Everyone has a key skill or ability that the group can use to ensure that the young people within the group get the most out of life.

Once again well done to every single member of the group, adults and young people alike, together you create a fantastically strong Scout Group.

Chris Wise (Group Scout Leader)

36th Ipswich Scout Section Report

It seems that every year we start the report with changes to the Scout leadership team and this year is no different. Since the last AGM a lot has changed within the scout group, Neil has now left and Damon has been very busy with work commitments so I have now taken over as scout leader with David. I would like to say a massive thank you to Luke for all the help he gives us on a scout night, many of you will know that Luke is part of the gang show has done so for many years, he is also an explorer as well as helping out within the cubs.

Over the last couple of years we structured the scout evenings to incorporate true scouting activities as well as trying to provide structure, stability and fun for our young members. I believe that we have this balance just about right and fully intend to carry it forward this year. We have done one camp so far this year at charity farm all the scouts enjoyed it although the weather was slightly cold. We have many more camps and fun activities planned throughout the year.

So what of the future – our vision is to spend as much time outside as possible and really try to instil into the scouts the benefits of healthy outdoor challenging activities. This will include more camping, hiking and hopefully participating in wider district activities. We feel this will build their confidence, physical fitness and character, as well as learning lots of new essential skills; and hopefully having lots of fun!

Finally, I would like to reiterate a point from the last couple of years. If you feel that you have any skills that would be interesting or beneficial to the Troop and would be prepared to spend a couple of hours instructing the scouts please speak to myself or any member of the leadership team. Not only would the scouts find this extremely rewarding, but you may just find yourself enjoying it as well. On behalf of the Scout Team I would like to take this opportunity to thank you for your continued support.

Jan Munroe (Scout Leader)

36th Ipswich Cub Scout Section Report

This year has been a very good year for the cubs with lots of trips including a fantastic day at Gilwell Park, new and more challenging badges, together with a fun seaside camp and lots of success too.

Our cubs were again fantastic in the Wolsey District quiz and secured yet another tremendous win for the second consecutive year before going on to represent the District in the County final at Kesgrave. Their knowledge of scouting again won them the Scouting knowledge round and were placed third overall in the whole County, an amazing achievement. The cubs, coached fantastically by David, entered the Wolsey District five a side football tournament this year and did not lose any of their games and came a brilliant third overall. The cubs also did tremendously well in the District Sports day as well as the swimming gala securing several wins, they didn't do quite so well in the construction challenge, but their efforts and most importantly their behaviour in all of the District and County events was outstanding and they were a shining example to the 36th. Well done Cubs.

We had a fantastic camp at Sizewell last summer under canvas, which for many cubs was



a new experience. Camping less than fifty metres from the sea was amazing and meant that the cubs were able to enjoy a great time in the sea, hiking to Thorpeness, football, backwood cooking, and many outdoor activities – the cubs enjoyed it so much and there is so much more to do that we are going again this summer with the scouts this time. We have booked a trip around Sizewell power station and we are going to be doing lots of seaside activities and many new and exciting adventures.

The Gilwell funday for the cubs and beavers was a brilliantly hot summer's day with so many activities to do including swimming, archery, rockets, circus, crafts, abseiling, climbing wall, water slide – the cubs got filthy but loved every second of it. It was so much fun and we couldn't miss the opportunity of not going again this summer. This will definitely become an activity that we offer the cubs every year from now on.



We have been able to book a trip to the Norfolk and Suffolk Aviation museum this month where the cubs will be able to see lots of planes and learn lots about how they work. This is a special day just for cubs and beavers and it will be an amazing opportunity for the cubs to undertake the brand new Air Activities badge stage 2.

The Cubs have also been completing lots of new badges including the Disability

awareness badge including learning how to write with their feet, making sandwiches one handed and meeting people with a range of different disabilities to aid the cubs knowledge and understanding of disabilities.

It has been fantastic to welcome Aaron and Heather on board this year, if you feel that you have any skills that would be interesting or beneficial to the Cubs or would be prepared to help out at cubs, please speak to myself or any member of the leadership team. Not only would the Cubs find this extremely rewarding, but you may just find yourself enjoying it as well. Thank you to all cubs, leaders, helpers and parents for making this year another fabulous scouting year.

Akela - Carol Lockwood (Cub Leader)

36th Ipswich Beaver Scout Section Report

We have had a great year and the colony has gone from strength to strength with both Beaver and Leader numbers increasing, we are now running at nearly 30 Beavers and a team of 3 Assistant Leaders, 1 Section Assistant and 2 Young Leaders, I would personally like to say thank you to the Assistant Beavers

Leaders, Section Assistant & Young Leaders for the excellent work they put into our meetings week after week. Running our Beaver colony is certainly not a one person task and I would not be able to do this without their help. With a Colony full with lots of diverse and interesting characters our meeting certainly are fun and entertaining.

We have recently created a Colony facebook page and this is proving a great way to get information to and from parents about current and future events, it is also proving to be a useful way of getting feedback from parents when suggesting events and meeting. As a parent of a Beaver we would welcome you to join our group, it is a closed group and only invited people are able to view this page. Please speak to me directly to get more information on how to join us on facebook.

We have had a lot of fun during our meeting on Wednesday nights and have covered a few badges whilst doing so, including the Friendship, Outdoor, Promise Challenge badges, along with the Air, Collector, Communicator, Explore, Photographer Activity badges. Our badge work has included crafts and building models, along with walks in the woods and building dens with the odd night of games thrown in.

We have also enjoyed many different activities outside of HQ including Swimming @ Crown Pools, Tobogganing @ Ipswich Ski Slope and a number of district events including the Easter Party @ Snakes and Ladders, Fun day and Sleepover which includes Abseiling, Grass Sledding, Archery Monkey Bridge and lots more. A Water Fight with sponges @ Hallowtrees, Sausage Sizzle also @ Hallowtree and the Beavers Sports day. All of which we are looking forward to doing again over the next 12 months.

I am currently planning our own Colony Sleepover at HQ in early June where we will be doing lots of different experiments with water, magnets, food and lots more. There might also be a trip to Colchester Zoo later this year if everything goes to plan.

I would also like to say thank you to the Beaver Parents who come along and help with our outdoor activities and would welcome more volunteers whenever possible. Parental support is extremely important and we are not be able to do the activities we have planned without you, as the youngest members of the Scouting organisation we need more parental supervision than the other sections and we really hope to have your continued support over the coming year.

Keeo - Julia Oldaker (Beaver Leader)

Date of Next AGM : 4th May 2016

Executive Committee Members Nominations.

The GROUP CHAIRMAN, DEPUTY CHAIRMAN & QUARTERMASTER are appointed by the Group Scout Leader and those appointments endorsed by the Scout Group Council at the A.G.M.

GROUP CHAIRMAN	Jonathan Gorham	QUARTERMASTER TOWN	Vacant
DEPUTY CHAIRMAN	Richard Farthing	QUARTERMASTER COUNTRY	Vacant

Nominations received and approved by the Group Scout Leader are as follows:

GROUP TREASURER	Vacant
GROUP SECRETARY	Vacant
MINUTES SECRETARY	Vacant
COMMITTEE MEMBER 1	Keith Taylor
COMMITTEE MEMBER 2	Steve Prentice
COMMITTEE MEMBER 3	VACANCY
COMMITTEE MEMBER 4	VACANCY
COMMITTEE MEMBER 5	VACANCY
COMMITTEE MEMBER 6	VACANCY

Current Leaders and Helpers

Group Scout Leader and trustee	Chris Wise
Scout Leader and trustee	Jan Monroe
Assistant Scout Leader	Damon Hyland
Assistant Scout Leader	David Oldaker
Cub Leader and trustee	Carol Lockwood
Assistant Cub Leader	Sarah Dommett
Assistant Cub Leader	David Oldaker
Beaver Leader and trustee	Julia Oldaker
Assistant Beaver Leader	Tim Vallow
Assistant Beaver Leader	Sarah Ingram
Assistant Beaver Leader	Carla Hyland
Young Leaders	Oliver Burton
Young Leaders	Luke Griffin
Young Leaders	Natalie Young

The 2015 Fete & Fun Day is being held on Saturday the 4th July at 1:30pm at Sprites Lane school playing field.

We need the following:

Homemade cakes

(A list of ingredients for the cakes is very helpful)

Prizes for the tombola or the draw

Cuddly toys



And lots of volunteers to help with delivering programmes

Setting up on Friday the 3rd and help clear up after the event, Manning the stalls during the event

And remember to invite your family and friends

To volunteer call Jonathan on (01473) 688393 or email

volunteer@36thipswichscouts.co.uk or sign up at the AGM

Have you always wanted to be a Train Driver?

Now is your chance!!!

Come and help us with "Project 36". The Kids ride on train that we take to events all over Ipswich during the summer.

We need people to tow the trailer to the events (so a tow bar is required) and drivers of the train. (Training will be provided.)

To volunteer call Jonathan on (01473) 688393 or email

trainvolunteer@36thipswichscouts.co.uk or sign up at the AGM

Please use easyfundraising.org.uk when shopping online.
It raises money for the scout group and costs you nothing!

easyfundraising
.org.uk

John Lewis **DELL** amazon.com

With over 2000 online retailers

CLICK HERE 