

365 DAYS OF ADVENTURE. HERE'S WHAT HAPPENED...

36th Ipswich Scout group annual report

May 2013 - May 2014

Financial Year Jan - Dec 2013

Registered Charity No. 1021334

Thursday May 22nd 2014 6:30pm

AGENDA

The meeting will be called to order at 6.30 p.m.

- 1] Welcome address
- 2] Business of the evening:
- 3] Apologies
- 3a] Minutes of the 2012 – 2013 Annual General Meeting
- 3b] Matters Arising
- 3c] Confirmation of the Minutes
- 4] Group Chairman's Report
- 5] Treasurer's Report
- 5a] Adoption of the Treasurer's Report and Statement
- 6] Group Scout Leader's Report
- 6a] Approval of Reports
- 7] Appointment of Group Chairman
- 7a] Appointment of deputy Group Chairman
- 8] Approval of nominated Committee Members
- 9] Election of Officers:
- 10] Jamboree 2015 Presentation
- 11] Date of Next AGM

Refreshments followed by entertainment from Group members

Minutes of the AGM of the 36th Ipswich Scout Group held on 24th May 2013

Jonathan introduced himself and the other members of the EXEC Committee as they had changed since last year.

Apologies

Apologies were received from Keith Taylor, Colin Bartram, Ray Taylor, Matthew Hall, Katherine Fern, Roger Fern, Iona Walker and Mitchell Billing.

Approval of Previous Meeting's Minutes

The minutes of the previous meeting were agreed as an accurate record of the meeting. It was proposed that these should be adopted by Lisa Hyland and seconded by Julia Oldaker.

Group Chairman Report

Jonathan thanked the previous members of the exec for all that they have done and the current committee for all their help in the past 12 months. Support is also needed and a short presentation was shown about scouts and volunteering. We had our annual fete which was a very good sunny day and we made approximately £3300 profit. Planning for this year's Fun Day is well under way, We have a number of stalls including John Banks where you could win a car. We have 7000 programs to be delivered and help on the stalls etc, so any help will be greatly appreciated. Also if your employer runs a match funding scheme please look into as this is a good way for us to raise more funds.

We have a team of helpers that clean up at the car boot sale once a fortnight. This raises us over £1,000 a year. Jonathan thanked Tony for all that he does with the Hall hire, building and equipment; he also thanked Pam for supporting Tony.

Treasurer Report

The total receipts for the group for the year were £20,989 and the expenses amounted to £30,004. This caused a deficit of £9,015 over

the twelve months ending 31st December 2012; this was mainly due to residual building costs of £14,250. The group's finances are in a good position at this time. The train at the moment we have no running costs but we will have and maybe get a profit. Colin Bartram from the Community action Suffolk did our accounts again this year, which were approved by Tony Marsh and seconded by Karen Plumber.

Group Scout Leader

Mitchell was unable to attend so Chris Wise stood in and reported that the group were maintaining good numbers. We had a group camp in the summer over 2 nights and the beavers joined for 1 night. Some of the group did the Gang Show well done to those that took part. Thanks to Tony and Pam for all their help during the summer months when we spend a lot of our time at charity farm, we would not be able to function as we do; your help is much appreciated.

Approval of report

The reports were approved by Damon Hyland and seconded by Richard Marsh.

Appointment of Chairman

Jonathan stepped down and Chris Wise took over and re nominated Jonathan Gorham there was a show of hands and this was agreed.

Appointment of Deputy Chairman

Richard Farthing was reappointed

Approval of nominated committee members

All standing exec members were reappointed

Date of next Meeting 23rd May 2014

Jonathan thanked everyone for coming and invited everyone to refreshments and to enjoy the entertainment.

May 2013 – May 2014 Reports

Chairman's Report

I would like to thank everyone who has helped the scout group in the last twelve months including leaders and assistant leaders, the exec and the fun day committee and all the parents and friends of the group who get involved and give up their valuable time to support the group. There are many different ways that people get involved with the scout group from being on the executive committee to helping out with the kids or helping man a stall at our fun day. We are always looking for more help. If you can help it will be very much appreciated even if you can only manage a couple of hours a year (although a bit more is better!)

In 2013 we had our annual fete in the first week of July. It was a great day with good attendance and made approximately £3000 profit. We increased our profits this year with a helper that had a "matched fund raising scheme" with his employer. Please check if this is something your employer has (a lot of banks do this) and let us know.

Planning is well under way for 2014 Fun Day. We have a number of new stalls and are planning a world cup football theme. As usual we need help delivering all 7000 programmes, setting up, clearing away and manning the stalls. If you can help please let us know.

Firework Night was well attended this year, we completely ran out of hot dogs and burgers. We will get more next year! Another successful Christmas fare was held and although we would have liked to have seen more people we made a respectable profit of just under £500.

John Primmer has been taking the 36th Ipswich Train to lots of events over the past twelve months and we have more bookings for this year. Thanks to everyone who helped over the last twelve months. In previous years the largest cost of the train has been the insurance however this year this activity has been added to the general scout policy which means no extra cost to us. Last year after the insurance the train made the group about £1000 profit so this year this looks like being more however we could do with more help including people with tow bars and budding train drivers.

We are no longer doing the Car Boot Clean Up as the Lions Club has decided to do it themselves. Thanks to everyone who helped with this before it ended. We recently held a race night and like the Christmas fayre it was successful in terms of raising money however we would have liked to seen more people

attending. A big thanks to everyone who helped organise the event. We are planning a quiz night for the Autumn term. I hope to see you all there.

A big thank you to my exec team, we have had many lively discussions on all sorts of subjects and hopefully made some progress in keeping the scout group a safe and fun place to be. The 36th Ipswich Scout group is currently growing; we are currently the second largest group in the area. It appears to me that all sections are taking part in more camps and activities which is great and we will be working hard to ensure that we have the facilities and equipment (and funds) that the group needs for the future.

Jonathan Gorham (Chairman)

Treasurers Report

The total receipts for the twelve months ending 31st December 2013 were £16,677.21 (Down by £4000) and our expenses were £13,904.63 (Down by £16,000) on the previous twelve months, this gave the group a surplus of £2772. At the end of the year the group had £30,877 in our account.

The groups fundraising efforts have brought in over £13,200 over during the year with around £6000 of this coming through the letting of the hall.

The accounts have been scrutinised this year by Colin Bush & Co, Chartered Certified Accountants.

Summary

The accounts remain quite healthy due to the work of the committee and helpers in fundraising. The hall brings almost half of our fundraising income and a lot of work has been done to make sure that it remains in a good condition.

Our quartermaster A Marsh pushes the hall lettings at every opportunity and also makes sure that everything is in good working order.

Clinton Brown (Treasurer)

Group Scout Leaders Report

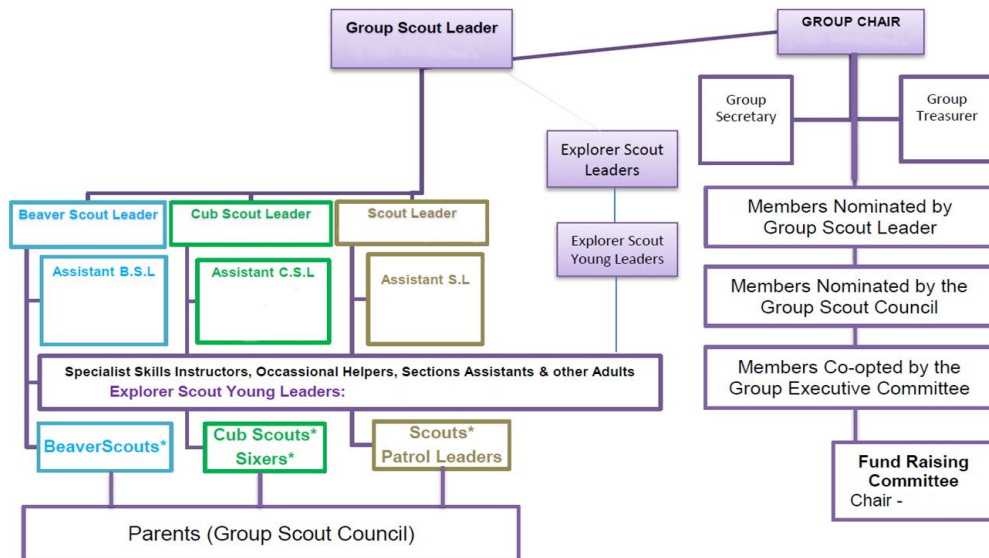
The Past year for the 36th Ipswich has been another successful year, even though we have had several changes with Leaders and adult members in the group. Mitchell stepping down as Group Scout Leader and myself taking on the role just before last year's AGM, thus this is my first Group Scout Leaders Report.

Before I talk about the individual sections, I'd like to explain the structure of how your Scout Group works.

The Group belongs to the Beavers Cubs & Scouts whilst they participate within the Scouting.

The Leaders & Executive Committee members are the trustees for the Group, on behalf for your children and run the Group for them, to provide a varied, interesting and enjoyable program of activities, whilst teaching them practical, social and leaders skills that they can use in adult life.

As a Parent or Guardian of a Beaver, Cub or Scout you automatically become part of the Group Scout Council. As a member of the Council, you represent your child at the Groups AGM and hold their voting right and to have your say in how the group is run.



All the Leaders, helpers and Group Executive Committee members give their time for free, to see your child/ren getting involved in new interesting, exciting activities and learn new social, leadership, team and practical skills.

For the Group to function and provide the varied program we that you the parents can assist in what every way you can to help run the Group.

This can be a commitment to become within a Section a

- Leader
- Sectional Assistant
- Occasional Helper
- Nominated Member of the Executive Committee
- Assisting in the plan or running of fund raising activities that keep the Group variable
- To help keep the two sites clean, tidy and do odd maintenance jobs

There is only so much that existing people can do and achieve, we need fresh people coming on board to continue to assist in the future success of the 36th Ipswich Scout Group. If you can help in any way please speak to any of the leaders or Executive Committee members, none of us will say no to any type of assistance that you could possibly give.

Poppy initially and now Julia is taking on the challenge of running the Beaver colony, with assistance from Tim, Jan, Natalia & myself. The Beaver colony numbers have been brought up to 24, which is a very healthy position for the colony. Spaces having been made available by Beavers moving on to Cubs and a slight increase in the colony numbers to manageable levels; this has resulted in reducing the List, but with success comes greater interest as more kids want to join in the fun. As a result the colony is very noisy!

Carol is now a year into the challenge of being the Cub Leader; she has built upon the success of Iona and Pam. The Cub pack is stable in terms of numbers with Beavers moving up to Cubs and retaining them within the group. The Cubs over the last year have been camping and the visit to London with more camping programmed. Iona has decided to step down as a warranted leader and has become an occasional helper. I would like to thank Iona for all her time and enthusiasm as a leader and hope that she will continue to stay involved with the Cubs for some time to come.

Damon has taken on the role of Scout Leader from Richard having taken over from myself, in addition to this Neil and Jan are now warranted leaders. The Scout Troop is still growing which is great to see, the scouts have been on several camps over the last year including the MOOT V camp arranged by the County every 4 years. This was the first time that the 36th Scouts have been to MOOT, it will not be the last, the Scouts had a wonderful weekend and the leaders that went were extremely impressed with the running of the event and the range of activities the Scouts could take part in.

After spending a lot of time behind the scenes chipping away at the District level and several initial meetings, I was over the moon, after a meeting with all parties in early December, that it was agreed for the Bourne Bears Explorers to be attached to the 36th Ipswich Scout Group. Their first meeting was at the beginning of January 2014 and their numbers have more than tripled, a few have slipped through the net but everyone involved is very pleased and the explorers should continue to grow. Even though Explorers are a District run part of Scouting, the Explorers are utilising all the facilities available to by the 36th Ipswich Scout Group and assisting in Group fund raising activities. It was also pleasing to see them do the first weekend camp earlier this year at Charity Farm. Richard & Matt

have transferred over to become Assistant Explorer Leaders. I wish them every success and hope you all welcome them to the 36th Scout Group.

This year we have new Leaders joining various sections that I would like to welcome to the Group,

Julia and Tim in Beavers,
Sarah in Cubs,
David in Scouts,

Our sections have grown from strength to strength with all the sections participating in District or County run activities. It was lovely to see all the sections represented at Wolsey District swimming gala, we may not have won any of the overall trophies, but the support shown by each of the other sections during their races was wonderful to see and the 36th was the noise Group there so well done to all those that took part. Hopefully we can continue this and this year possibly win some of the sectional trophies.

All sections are increasing the number of individual and joint camping weekends; this is where they put into practice the skills they having been learning during the weekly section meetings.

It truly is great to see all of the young people involved in the group have developed immensely in the past year. All sections have also been making the most of our country HQ at Charity Farm.

Two years ago, we had our first for many years Group Camp which was very successful.

We are planning this year to do a Family Camp again at Bradfield Park at the end of August 2014. As the name implies, this camp is open to the whole family of any child within the group, thus the parents, younger or old siblings can come and enjoy a weekend of fun, laughs, meet new people and participate in activities. The camp is themed around this year's Commonwealth Games.

The cost is £35 per person, this includes camping fees and the weekend's food, letters have gone out to all sections, if you have not received a letter please speak to any of the Leaders, and we are hoping to have 80 – 100 people for this camp.

We had yet another successful firework evening with many parents and young people turning out and braving the cold Sunday evening. We had our second Christmas fayre raising over £500 for the group. Yet again we had a very successful fete, raising the group over £3000, the weather was very kind to us and we had many familiar and unfamiliar faces walking through the gate.

Once again this year, the 36th Ipswich was well represented in the Gang show with members of scouts, cubs and young leaders. Well done to each and every one of you who took part.

I would like to thank all the Leaders and Helpers that give up so much time every week to dedicate to the young people of the group, ensuring they get the most out of life and expand their skills and knowledge to help them develop into better people and enjoy new experiences along the way. Without these valuable people, the group would not be as successful as it is today.

I would also like to thank the committee for their continued hard work and support in keeping the group running and ensuring the future of the 36th Ipswich is a very stable one. With all the red tape, polices and rules, it is not always easy but the committee are always dedicated to ensuring the best for the young people of the group.

A big thank you to Tony for his continued support with the group, especially with the running of the town and country HQ's. This is a full time job in itself, let alone ensuring the success of the Hall hire and always being the lead with other fundraising events.

The Hall hiring generates half the annual costs of running the 36th Ipswich Scout Group, without Tony's dedication to this, and all the other activates that he is involved in; the Group would not be as successful and financial stable as we are. He is also a great person to have helping with teaching the Beavers, Cubs, Scouts and now Explorers a thing or two!

Also as part of the Hall hiring, I would like to thank Jan and her father of all the cleaning they have done of the last year.

This past year would have been a lot harder for me if it wasn't for Jonathan, helping to steer the group forward. Jonathan has been fantastic in organising the Committee members and trying to save money for the group and worked hard with me to get more members involved and try to get our data up to date and changed some processes to make things easier for the adults who support the sections. We have challenges ahead this year with the new Scout Data (COMPASS) coming on line to manage the Groups member's records.

The group cannot run without the adult support, especially from Parents. There is a lot that goes into Scouting and there are many different ways that you can help. Everyone has a key skill or ability that the group can use to ensure that the young people within the group get the most out of life.

Once again well done to every single member of the group, adults and young people alike, together you create a fantastically strong Scout Group.

Next year is the Scout movements World Jamboree, to be held in Japan. I'm delight that one of the 36th Scouts applied, short list, invited to section and was final offered a place within the Suffolk contingent of 38. So many congratulations to Jade, we all wish her well and the Group will assist Jade in raising £3500 to enable her to go.

Chris Wise (Group Scout Leader)

36th Ipswich Scout Section Report

It seems that every year we start the report with changes to the Scout leadership team and this year is no different. Since the last AGM we have lost Richard who has now moved on to help with the Explorers, meaning that I have once again been moved into the Scout Leader role. Neil has remained with the team and his enthusiasm and practical skills have once again benefitted the Troop considerably. I would like to take this opportunity to officially welcome Jan to the team who will provide the much needed female balance that is needed to keep us boys in check, and I also welcome our newest addition David. David has already started to have an excellent impact on the Troop, and his fresh ideas and energy are just what we are looking for in role models for our young people.

We currently have a total of 26 Scouts with a steady influx from the Cub section which should sustain the Troop very well. I would like to welcome all our new Scouts especially our newest additions Genny and Tommy who we invested on the Town Hall steps on St George's day. Unfortunately we lost Jade, Mathew and Luke to the explorers, but with our new close ties to the Explorer section we do have regular contact and hope that they continue to help us within the Group. We will still take this opportunity to wish them the best of luck on the next stage of their scouting adventure, especially Jade whom we will continue to support on her epic journey to the World Scout Jamboree in Japan.



Over the last couple of years we structured the training programme to incorporate true scouting activities as well as trying to provide structure, stability and fun for our young people. I believe that we have this balance just about right and fully intend to carry it forward this year. As our summer camp last year we were part of the 1000 Suffolk Scouts and Guides that flooded onto Bentwaters Park in Rendlesham



for a 4 day long camp with hundreds of activities promoting outdoor fun. There was even a disco every night where the scouts could let off steam and they managed to make lots of new friends throughout the county.....even with the strict chaperoning rules instigated by 'The Management'.



We have already had our first overnight camp this year at Charity Farm and we have another weekend planned for June at Hallowtree Campsite, before our big Group Family Camp this August at Bury St Edmunds. We are now concentrating on more outdoor activities this term to allow this to be as effortless and enjoyable as possible. We have spent many hours now refining our Map and Compass skills, Camp Cooking, Pioneering and First Aid; although they still have much to learn! We will be spending much more time at Charity Farm between now and the end of summer further refining these core scouting skills.

This year we had two Scouts involved in the Ipswich Scout Gang Show, so congratulations to Grace and Luke who did extremely well, let's try and get the interest levels of others increased for next year. This year the Scouts have been active in their fitness challenge badge and we hope to finalise this on the 16th June with a sponsored cycle around Alton Water. We are hoping that many of you will come along and support the cyclists and the plan is to hold a family BBQ afterwards, where we can all relax and hopefully meet other parents from the Troop.

So what of the future – our vision is to spend as much time outside as possible and really try to instil into the scouts the benefits of healthy outdoor challenging activities. This will include more camping, hiking and hopefully participating in wider district activities. We feel this will build their confidence, physical fitness and character, as well as learning lots of new essential skills; and hopefully having lots of fun!



Finally, I would like to reiterate a point from the last couple of years..... if you feel that you have any skills that would be interesting or beneficial to the Troop and would be prepared to spend a couple of hours instructing the scouts please speak to myself or any member of the leadership team. Not only would the scouts find this extremely rewarding, but you may just find yourself enjoying it as well. On behalf of the Scout Team I would like to take this opportunity to thank you for your continued support

Damon Hyland (Scout Leader)

36th Ipswich Cub Scout Section Report

This year has been an amazing year in cubs with lots of fun activities, camps, trips, new badges, challenges and successes too.

Our Cubs were fantastic in the Wolsey District Quiz and secured a tremendous all round knowledge win, before going on to represent the District in the County final in Bury. Our Cubs again secured an outstanding victory in the Scouting



knowledge round and came second overall in the whole County.

Following on from that success, our cubs created an amazing secret Headquarters for the Royal Family which then had to transform into a rocket to save the Royal's at the Wolsey District Construction challenge



– again they came away with another fabulous victory. They again represented the District, this time in the County construction final and although they did not win, they created yet another amazing futuristic construction. The cubs also entered the Wolsey District five a side football tournament, coached by David and Steve, they trained amazingly hard and played brilliantly throughout every game. Their sporting abilities and attitude shone through and they were a credit to the 36th Ipswich Cubs

The older cubs took part in a District Sixer and Secondar camp at Hallowtree in September and they learnt several new skills and were able to try many new activities that they had not taken part in before including abseiling, shooting, backwards cooking-lighting the fire with piece of wire, cotton wool and a battery. Our sixers and seconders will have the opportunity to attend the District camp again this year, where lots of even more new skills and activities are planned for September.

Several of our cubs also took part in a joint cub and scout camp at Thorrington just outside Colchester in October half term, even though it was very wet, they had a fabulous time crate stacking, go-karting, adventure run, orienteering to name just a few activities. This summer we will be going to Sizewell for a cub camp in July under canvas with a sea-side theme so hopefully this will be a little drier and warmer than October.



The cubs also took part in an fabulous trip to London travelling on the train and underground where we visited both the Science museum and the Natural History museums before going on a sight-seeing trip around London including Big Ben, Westminster Abbey, the London Eye and we even managed to “sweet talk” the police to let us go into Downing street and have our photos taken outside number

10, before coming back to the HQ for a sleepover. We had an amazing time and another trip will certainly be planned for 2015.

Thank you to the cub leaders, helpers and parents as well as the cubs themselves for making the last year such a fabulous Scouting year.

Carol Lockwood (Cub Leader)

36th Ipswich Beaver Scout Section Report

It has been a great year for the Beavers and we have had a lot of fun, we are certainly looking forward to what the next year holds and the new badges that have been released, including Camp Craft, Gardening and Space.

Our Colony is currently full with lots of diverse and interesting characters, all of which help make our meetings fun and eventful.

I have recently updated our web page with details of our current term plans and locations, this will be done on a term by term basis from now on. Please check it out and let me know if there is anything that can be added to make the page better for you, as it is a page for existing as well as new parents and all input is welcome.

In order to reduce our carbon footprint we have asked all Beaver parents to confirm current and up to date email address so that information / plans & letters can be sent via email and we are hoping to implement this soon.

We have been working on a new 2 year plan in order to incorporate the new badges released earlier this year, if there are any parents or group members able to help with any specific badges we are always looking for new and improved ideas to help us meet the badge criteria.

Summer	Winter	Spring
Outdoor Challenge Badge Explore, Gardener & Camp Craft Activity Badges	Global Challenge Badge Air, Imagination, Collector & Space Activity Badges	Friendship Challenge Badge Animal Friend, Photographer & Communicator Activity Badges

As Part of their Global Challenge Badge the Colony recently enjoyed an evening with Jade Marsh talking about the 2015 Jamboree in Japan and had a lot of fun with the bear origami and Japanese version of Rock Paper Scissors, as a thank

you the Beavers took part in a sponsored silence, which they did *brilliantly* and raised a massive £300, which has been donated to Jade's fundraising efforts for the Jamboree.

We have also taken part in the District Easter Party at Snakes & Ladders and the Fun Day / Sleepover at Hallowtrees, which included Monkey Bridge / Archery & Abseiling. Both events were well attended and all the Beavers did the group proud by joining in and having fun. We are looking forward to our Gilwel trip with the Cubs and the Beavers District sports day both at the end of June.

I would like to say thank you to all the 36th Family for welcoming me into my new role as BSL and I am looking forward to the challenges ahead.

I would also like to say thank you to the Beaver Parents who come along and help with our outdoor activities and would welcome more volunteers whenever possible. Parental support is extremely important and we are not be able to do the activities we have planned without you, as the youngest members of the Scouting organisation we need more parental supervision than the other sections and we really hope to have your continued support over the coming year.

Thank You

Keo - Julia Oldaker (Beaver Leader)

Borne Bear Explorers Report

The section has been welcomed by the 36th Ipswich scouts since moving from the 32nd Ipswich HQ from January this year. Since then we have grown month on month to have a group of 10 youngsters which are varied ages between 14 and 18 with 3 leaders helping run things.

With support from the scout section at the 36th and other sections in the district the unit will continue to grow and improve further.

We have one member and a leader going to the international jamboree in Japan in 2015 which the group has helped with fundraising.

We have 3 members doing the duke of Edinburgh bronze awards and have one going for their queens platinum award.

Overall the last few month's things have improved to the last 12 months with the section and we continue forward.

James Richard (Explorer Scout Leader)

Quartermaster's Report

HQ.

The lettings at the HQ have been steady and produced slightly more income due to a few more daytime lets than the previous year. This is obviously our most lucrative single source of income for the Group at the moment.

I believe that our continual improvement policy should be continued, as people who hire the HQ do notice that we strive to keep it up to date and in a reasonable condition. Our letting rates are also very competitive compared to others in the area.

The HQ was let out for 500 hours to outside interests, parties, meetings, etc. That does not include scouting use of 9 hours a week for 38 weeks of the year plus another 20 hours of Exec. Meetings, and possibly, 15 to 20 hours of Group fund-raising events at the HQ during 2013.

The two projects mentioned in the previous year's annual report [2012] have not been advanced to completion as yet, [Echo reduction and Solar Panels]. I hope that we do continue with them as soon as possible, particularly the Echo reduction as I know that it does put off potential hirers for certain activities.

Equipment & Maintenance.

We have continued with our updating of equipment programme in 2013 by purchasing a 40m x 4m Kampa Marquee, 5 Pop-up 3m square Gazebos, a 3m square Event Shelter, 6 new Camping Gas Lamps, Log Splitters and some more Lightweight Hike/Camping gear to keep up with the better, more advanced programme the Scout Troop is now getting.

We have converted a storm damaged tent into a "Stocks" stall for the Fete - a far better arrangement than in previous years.



Maintenance to our site at Charity Farm and at the HQ, apart from having new white lines in the Car Park and the Hall floor resurfaced, has fallen behind due mainly to a lack of physical help from within the Group.

I thank the Executive committee for helping to keep our equipment assets up to date.

Tony Marsh (Quartermaster)

Date of Next AGM : 21st May 2015

Executive Committee Members Nominations.

The GROUP CHAIRMAN, DEPUTY CHAIRMAN & QUARTERMASTER are appointed by the Group Scout Leader and those appointments endorsed by the Scout Group Council at the A.G.M.

GROUP CHAIRMAN	Jonathan Gorham	QUARTERMASTER TOWN	Tony Marsh
DEPUTY CHAIRMAN	Richard Farthing	QUARTERMASTER COUNTRY	Tony Marsh

Nominations received and approved by the Group Scout Leader are as follows:

GROUP TREASURER	Clinton Brown
GROUP SECRETARY	Nicola Wise
MINUTES SECRETARY	Nicola Wise
COMMITTEE MEMBER 1	Keith Taylor
COMMITTEE MEMBER 2	Priya Nainthy
COMMITTEE MEMBER 3	VACANCY
COMMITTEE MEMBER 4	VACANCY
COMMITTEE MEMBER 5	VACANCY
COMMITTEE MEMBER 6	VACANCY

Current Leaders and Helpers

Group Scout Leader	Chris Wise
Scout Leader	Damon Hyland
Assistant Scout Leader	Neil Pulman
Assistant Scout Leader	Jan Monroe
Cub Leader	Carol Lockwood
Assistant Cub Leader	Pam Marsh
Assistant Cub Leader	Susan Thompson
Beaver Leader	Julia Oldaker
Assistant Beaver Leader	Sam Allum
Assistant Beaver Leader	Tim Vallow
Young Leaders	Oliver Burton
Young Leaders	Josh Day

The 2014 Fete & Fun Day is being held on Saturday the 5th July at 1:30pm at Sprites Lane school playing field.

We need the following:

Homemade cakes

(A list of ingredients for the cakes is very helpful)

Prizes for the tombola or the draw

Cuddly toys



And lots of volunteers to help with delivering programmes

Setting up on Friday the 5th and help clear up after the event, Manning the stalls during the event

And remember to invite your family and friends

To volunteer call Jonathan on (01473) 688393 or email

volunteer@36thipswichscouts.co.uk or sign up at the AGM

Have you always wanted to be a Train Driver? Now is your chance!!!

Come and help us with "Project 36". The Kids ride on train that we take to events all over Ipswich during the summer.

We need people to tow the trailer to the events (so a tow bar is required) and drivers of the train. (Training will be provided.)

To volunteer call Jonathan on (01473) 688393 or email

trainvolunteer@36thipswichscouts.co.uk or sign up at the AGM

Please use easyfundraising.org.uk when shopping online.
It raises money for the scout group and costs you nothing!

easyfundraising
.org.uk

John Lewis **DELL** amazon.com.

With over 2000 online retailers

CLICK HERE

